

हर टाइल के पीछे MAGIC



INSTAFIX

2k Epoxy Spot Bonding Adhesive

TECHNICAL DATA SHEET



Superior Bond Strength



High Sag Resistance



No Shrinkage



Quick Setting



Large Format Tiles & Stones



Low VOC



Available in 1.5 kg Box

PRODUCT DESCRIPTION

Instafix is an epoxy based two-component adhesive formulated with significant strength for instant spot bonding of large tiles and stones. This product is suitable for all type of tiles and stone including marble, granite, large format ceramic & vitrified tiles and regular size metal tiles for vertical or overhead applications both indoors and outdoors.

SUITABLE FOR

Material & Area

- Precast terrazzo & Natural Stones
- Large format and glass mosaic tiles & stones
- Residential, Commercial & Industrial
- Internal & External floor, walls & overheads
- Engineered stones & regular size metal tiles

Substrate

- Cement based plaster/ Concrete/ Screed
- Drywall surfaces
- Tile on tile
- Plywood, wood & glass
- PU based surface
- Metal surfaces
- Epoxy/ PU based substrates

TECHNICAL DETAILS

Conforms to IS 15477:2019 Type 5 T 'S2'

PHYSICAL PROPERTIES @ 70° F (21° C)

PARAMETERS	RESULTS
Appearance	Part A Hardener (Yellowish Paste) Part B Resin (off White Paste)
Mixing Ratio	50 (Part A): 100 (Part B)
Mixed Material Appearance	Yellowish Paste
Mixed Density	1550-1650 Kg/mm ³
Pot Life	>10 Minutes
Open Time	>10 Minutes
Final Setting Time	3 Hours
Initial Setting Time	15 Minutes
Time to Light Foot Traffic	3 Hours
Ready for Grouting	3 Hours
Ready to use	3 Days

PERFORMANCE PROPERTIES

IS 15477

PARAMETERS	REQUIREMENTS	RESULTS	TEST METHODS
Tensile Adhesion (Dry Condition 28 Days)	$\geq 2.0 \text{ N/mm}^2$	2.5–3.5 N/mm^2	IS 15477:2019 Annexure A Clause 5.1
Tensile Adhesion (Wet Condition 28 Days)	NA	2.5–3.5 N/mm^2	-
Shear Adhesion (Dry Condition 28 Days)	$\geq 6.0 \text{ N/mm}^2$	6.5–7.5 N/mm^2	IS 15477:2019 Annexure B Clause 5.2
Shear Adhesion (Wet Condition 28 Days)	NA	6.5–7.5 N/mm^2	-
Shear Adhesion (Heat Aging Condition 28 Days)	$\geq 3.0 \text{ N/mm}^2$	3.5–4.5 N/mm^2	IS 15477:2019 Annexure B Clause 5.2
Deformability	>5.0 mm	6.0–7.0 mm	IS 15477:2019 Annexure F Clause 5.6

Instafix adhesive conforms to IS 15477:2019 Type 5T S2

ASTM D 4541

PARAMETERS	REQUIREMENTS	RESULTS	TEST METHODS
Pull-Off adhesion strength after 3 hours	$\geq 2.0 \text{ N/mm}^2$	2.0–2.5 N/mm^2	ASTM D 4541
Pull-Off adhesion strength after 24 hours	$\geq 3.0 \text{ N/mm}^2$	3.0–3.5 N/mm^2	ASTM D 4541

Instafix adhesive conforms to ASTM D 4541

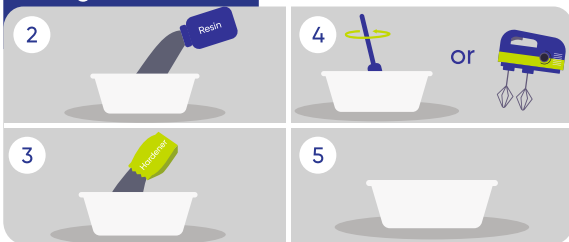
INSTALLATION

Surface Preparation



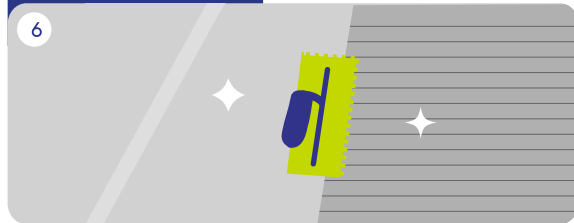
1. Ensure the substrate is level, cured, undamaged, compact, rigid, resistant, dry, and devoid of debonding agents and rising damp.
2. Ensure that all surfaces are level and accurate within a tolerance of 6 mm per 10 ft. (3m).
3. Eliminate rust from iron surfaces through sandblasting, and allow screeds/new concrete slabs to cure for a minimum of 28 days.
4. Install expansion joints and fill them with a suitable sealant.
5. Avoid covering expansion joints with thin-set tile adhesive/tile.

Mixing



2. Mix 1 portion of Part A Hardener with 2 portions of Part B Resin.
3. It is advised to mix the resin & the hardener for at least 2-3 minutes thoroughly until uniform colour is obtained with no lumps. Appropriate resin- hardener proportion & rigorous mixing will lead to optimum bond strength.
4. Do not dilute the mix with solvents as it lowers the adhesiveness and affect the viscosity of the adhesive.
5. The quantity mixed should be consumed within 10 minutes post which the mixture tends to thicken and become non workable. Put the cap back on the containers as prolonged exposure to air will lead to dry skin formation which affects the efficacy of the product.
6. If the quantity is small, mix it with a margin trowel or putty knife whereas larger quantities should be mixed with an electric stirrer at slow speed drills (50 - 100 rpm)
7. Maintain the temperature of the resin-hardener mix by keeping it away from extreme hot and cold sources.

Application



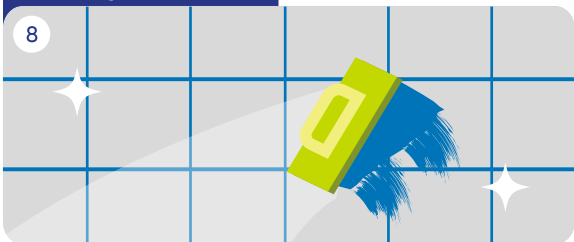
6. In case of spot bonding application, uniformly apply a mixed material dabs on the back side of the stone or tile. It is recommended to apply minimum 5 dabs per sq. feet (4 in each corner and 1 in the centre).
7. Cover at least 10% area of each piece of stone or tile with the adhesive. The dab thickness should be 3 mm.
8. The thickness of the application will increase as per the type of substrate.
9. The tiles must be fixed within 5-10 mins of adhesive being applied.

Cleaning



7. Clamps should be used for safety & removed after 5 - 6 hours. Excess adhesive needs to be cleaned with a damp sponge.

Grouting



8. Grouting should be carried out after 24 hours of tiling. It is advisable to use the appropriate grouting material from Magicrete range of cementitious or epoxy grouts.

COVERAGE

- The product provides a coverage of 100 sq. feet / 1.5 kg at 3 mm dab thickness.

Note - *Coverage is based on smoothness and evenness of the substrate and the thickness of mortar used.



SHELF LIFE

Factory packed Instafix carries a shelf life of 12 months in its original packaging, if stored in cool & dry place. Out of direct sunlight, dampproof condition and protect from extremes of temperature.

LIMITATIONS

Adhesives and grouts for tiles are not replacements for waterproof membranes. When a waterproof membrane is required, use Magicrete waterproofing products by Magicrete or any other waterproofing product available in the market.

SAFETY PRECAUTIONS

- In case of eye contact, rinse immediately with plenty of clean water and seek medical advice.
- Wear suitable protective clothing, gloves, and eye/face protection.
- After contact with the skin, wash immediately with plenty of clean water.
- Keep out of reach of children.

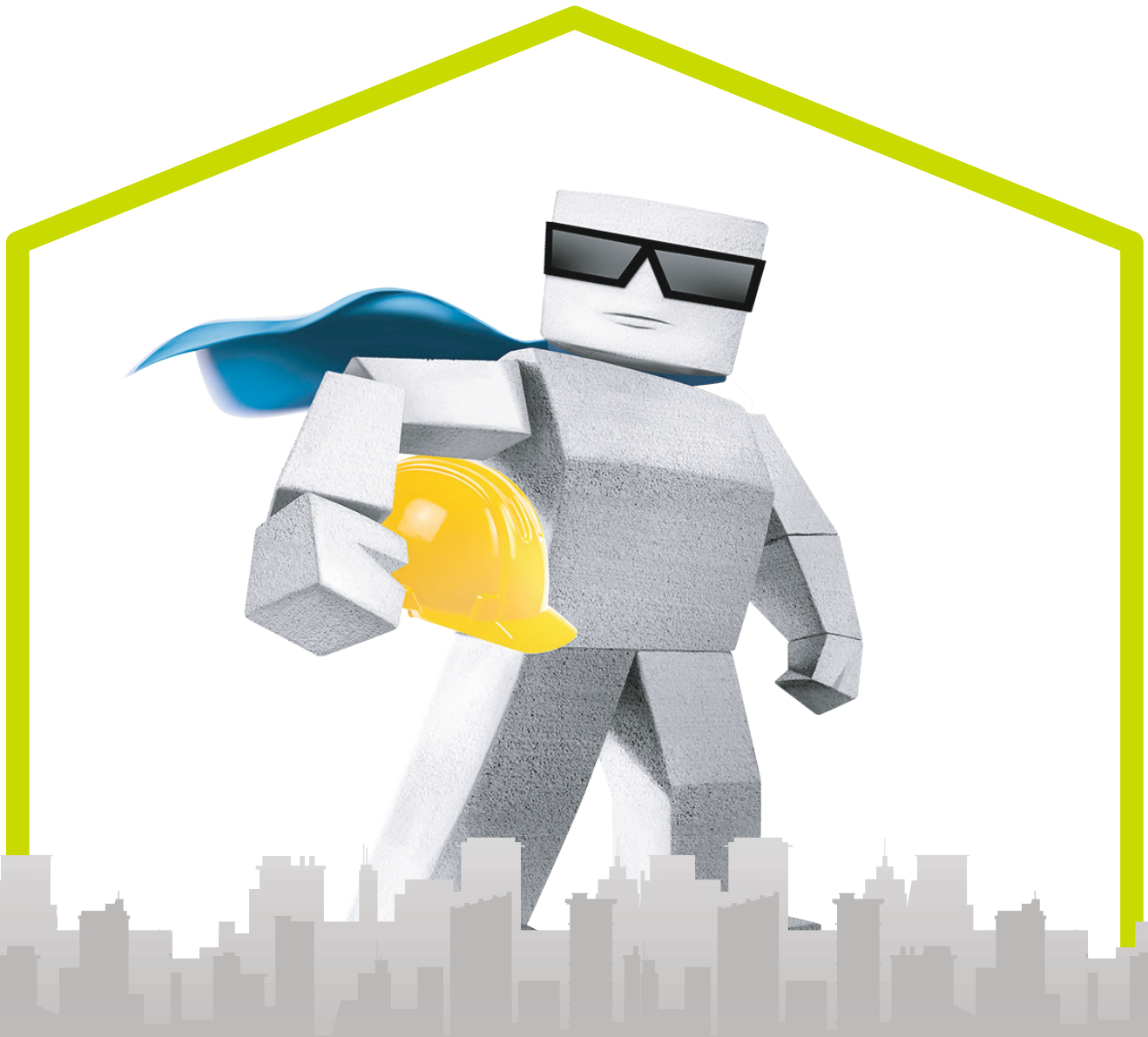
IMPORTANT NOTES

- Stir well before use.
- During cold weather protect finished work from use until fully cured.
- Excess water on substrate must be removed by suitable means.
- Correct resin/ hardener proportion & thorough mixing is the secret of consistent and optimum bond strength.
- Do not mix large quantity at a time.
- Never dilute resin-hardener mix with solvents to lower the viscosity.
- Place the respective caps of Resin & Hardener whenever they are not in use.
- Do not keep the resin/ hardener mix near heat source such as hotplate.
- Protect against direct rain/ foot traffic for at least 3 hours.
- Tiles/stones should not be installed directly on expansion joints.
- Leave gap between the tile & fill gaps with Magicrete tile grout.
- Do not use Magicrete Instafix to bond transparent glass materials.
- For light color stone & mosaic, do demo/ sampling for color staining & compatibility before application.
- For all exterior tile/stone fixing, large format tile & drywall/vibrational area tile installation, Consult with Magicrete technical team before installation
- Floor tile/traffic area tiling should be fixed with thin bed applications
- For light colour stone/mosaic, do demo/sampling for colour staining & compatibility before using

*While the company guarantees its products against defective materials, the use and application of these products are made without guarantee since the conditions of their application are beyond its control. It is recommended to verify with the company that the product is suitable for the intended use, and that this Data Sheet version is the latest one. The company may modify it without prior notice. Technical characteristics are listed for guidance only. For more information, please contact the company office in your location.

magicrete®

magic behind happy homes



Magicrete Building Solutions Pvt. Ltd.

(ISO 9001 :2015, ISO 14001 :2015 & ISO 45001 :2018 Certified co.)

101 Ritz Square, Near Narmad Library,
Ghod Dod Road, Surat-395007 (Gujarat)

80 70 40 80 10

info@magicrete.in

magicrete.in



SCAN FOR
DIGITAL COPY

