

BEAUTIFYING YOUR HOMES TILE BY TILE

EG-200 EPOXY TILE GROUT (2K)

TECHNICAL DATA SHEET



UV
Resistance



Highly Water
Resistant



Chemical
Resistant



Zero Stain
Grout



Temperature
Resistant



Low
VOC



Available in 5kg

PRODUCT DESCRIPTION

Magicrete EG-200 (2K) is a two component epoxy based tile grout specially designed for quick grouting of joints up to 12 mm with excellent chemical and mechanical resistance properties. It is UV resistant which makes it a perfect solution for external application. It is available in 12 popular range of colours.

SUITABLE FOR

- Vitrified Tiles/ Ceramic Tiles
- Granite/ Marble
- Low Thickness Slabs
- Terrazzo Tile
- Agglomerates Stones
- Large Format Tiles
- Glass Mosaic Tiles
- Porcelain Tiles
- Natural Stone

APPLICATION AREAS

- Moisture sensitive areas
- Water submerged areas
- Underfloor Heating
- Hygiene required areas
- Areas prone to aggressive Chemicals
- Heavy traffic/movement areas
- Residential & Commercial Installations
- Wider Tile Joints
- Interior/Exterior Areas

TECHNICAL DETAILS

Conforms to: ANSI A118.3-1999; EN 13888 RG; ISO 13007-4 (G); IGBC; EN 12004 R2T

Physical Properties @ 27± 1°C

Appearance	Part A Resin (Coloured Paste) Part B Hardener (Liquid Pale Yellow)
Mixing Ratio	93 (Part A): 7 (Part B)
Mixed Material Consistency	Smooth Creamy Paste
Component Density	Part A - 1560 ± 50Kg/mm ³ , Part B - 1000 ± 50Kg/mm ³
Mix Density	1600 ± 50 Kg/mm ³
Pot Life	>60 Min
Foot Traffic	24 Hrs
Heavy Traffic	3 Days
Joint Width	2-12 mm
Sag Resistant	No Sag
Total VOC content	<8 gm/kg
Application Temperature	10°C to 35°C
Temperature of Use	-20 to 100°C
Coverage Chart	Refer Coverage Chart on Page 5
Chemical Resistance	Refer Table on Page 6
Available Shades	12

PERFORMANCE PROPERTIES

ANSI A118.3

PARAMETERS	REQUIREMENTS	RESULTS	TEST METHODS
Water cleanability	>80 Minutes	100-120 Minutes	ANSI A 11 8.3: Clause 5.1
Initial setting time	>120 Minutes	150-180 Minutes	ANSI A 11 8.3: Clause 5.2
Service setting time	< 7 Days	2-3 Days	ANSI A 11 8.3: Clause 5.2
Shrinkage after 7 days	< 0.25%	<0.10%	ANSI A 11 8.3: Clause 5.3
Sag in vertical joints	No Sag	Pass	ANSI A 11 8.3: Clause 5.4
Bond strength to quarry tile	>6.87 N/mm ²	8.2 N/mm ²	ANSI A 11 8.3: Clause 5.5
Compressive strength after dry storage	>45 N/mm ²	52-56 N/mm ²	ANSI A 11 8.3: Clause 5.6
Tensile strength @ 7 days	>6.87 N/mm ²	10-11 N/mm ²	ANSI A 11 8.3: Clause 5.7
Thermal shock	>3.43 N/mm ²	7.5 N/mm ²	ANSI A 11 8.3: Clause 5.8

The grout mortar conforms to ANSI A118.3-1999

ISO 13007/ EN 13888

PARAMETERS	PARAMETERS	RESULTS	TEST METHODS
Abrasion resistance	<250 mm ³	130-170 mm ³	ISO 1 3007-4: Clause 4.4, EN 12808 - 2
Flexural strength after dry storage	>30 N/mm ²	35-40 N/mm ²	ISO 1 3007-4: Clause 4.1.3, EN 12808 - 3
Compressive strength after dry storage	>45 N/mm ²	50-55 N/mm ²	ISO 1 3007-4: Clause 4.1.4, EN 12808 - 2
Shrinkage	< 1.5 mm/m	0.02-0.04 mm/m	ISO 1 3007-4: Clause 4.3, EN 12808 - 5
Water absorption after 240 minutes	< 0.1 g	0.04-0.06 g	ISO 1 3007-4: Clause 4.2, EN 12808 - 5

The grout mortar conforms to ISO 13007-4 (G) /EN 13888 RG/ EN 12004 R2T

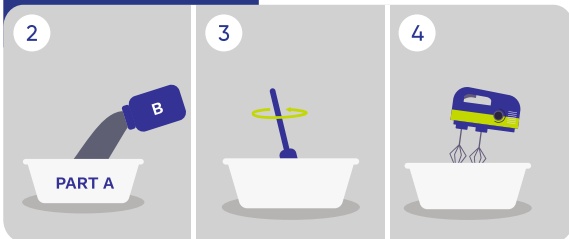
INSTALLATION

Surface Preparation



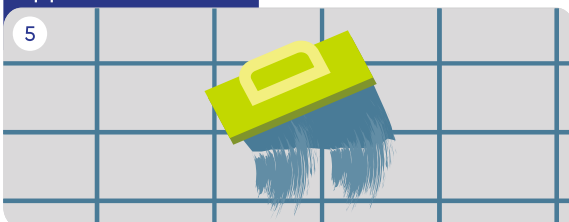
- Ensure that the surface to be grouted is clean and free from any dirt, dust, debris, or other contaminants. You can use a sponge, cloth, or vacuum to remove these impurities.
- Avoid using acid tile cleaners as they may affect the adhesion of the grout. If you have used an acid cleaner, rinse the area thoroughly with water before proceeding.
- If there is any existing grout between the tiles, it should be removed using a grout saw or a rotary tool. Make sure to remove all the old grout to ensure proper adhesion of the new grout.

Mixing



- Prior to mixing, shake the bottle of hardener and stir the base thoroughly.
- Mix Part A (Resin) and Part B (Hardener) together in a clean bucket.
- Blend the liquids completely by mixing by hand or using a mixer with a slow speed of less than 300 RPM.
- Be careful not to introduce air into the mixture by avoiding very high mixing speeds or over-mixing.
- The paste should be used within 45 to 60 minutes after mixing.

Application



- Use a hard rubber squeeze or grout float to firmly press EG-200 grout into the joints.
- Hold the float at a 90° angle and pull it diagonally across the joints and tilt at a 45° angle to avoid pulling out of material.
- Continue filling the joint with EG-200 until it is completely packed with the material. Ensure there are no voids or air pockets in the joints.
- Check the filled joints every 20–40 minutes to see if they have started to harden.
- The surface temperature must be between 15°C to 35°C (59°F to 95°F) for optimal grout application.

Note: *Movement Joints should be provided in accordance with BS 5385: parts 1-5 and may be filled with the appropriate flexible sealant.*

Cleaning



- Clean excess grout from tile joints and tiles within 30–45 minutes or before the product dries.
- Begin by using a damp, rough-textured sponge to remove grout residue. Repeat the process with wet towel in 12–24 hours to remove the remaining haze.
- For stubborn grout stains, use Magicrete CleanPro or an alkaline detergent that won't damage the joint finish.
- Avoid abrasive cleaners or tools that could scratch or harm the surface.
- Clean tools and containers with clean water while the grout is still fresh.

COVERAGE CHART

Tile Dimension (mm)			Theoretical Coverage in kg/m ²						
Length	Width	Thickness	Width of joint (mm)						
			2	3	4	5	6	8	10
25	25	6	1.498	2.246	2.995	3.744	4.493	5.990	7.488
25	50	6	1.123	1.685	2.246	2.808	3.370	4.493	5.616
50	50	6	0.749	1.123	1.498	1.872	2.246	2.995	3.744
100	100	6	0.374	0.562	0.749	0.936	1.123	1.498	1.872
100	100	10	0.624	0.936	1.248	1.560	1.872	2.496	3.120
300	200	6	0.156	0.234	0.312	0.390	0.468	0.624	0.780
300	300	6	0.125	0.187	0.250	0.312	0.374	0.499	0.624
450	300	6	0.104	0.156	0.208	0.260	0.312	0.416	0.520
600	300	6	0.094	0.140	0.187	0.234	0.281	0.374	0.468
600	600	8	0.083	0.125	0.166	0.208	0.250	0.333	0.416
800	800	8	0.062	0.094	0.125	0.156	0.187	0.250	0.312
1000	1000	10	0.062	0.094	0.125	0.156	0.187	0.250	0.312
1200	600	10	0.078	0.117	0.156	0.195	0.234	0.312	0.390
1200	800	10	0.065	0.098	0.130	0.163	0.195	0.260	0.325
1200	1200	12	0.062	0.094	0.125	0.156	0.187	0.250	0.312
1600	800	12	0.070	0.105	0.140	0.176	0.211	0.281	0.351
1800	1200	12	0.052	0.078	0.104	0.130	0.156	0.208	0.260

*The coverage details mentioned in the chart can vary as per the size of the tiles, joint width, and application method.

Coverage Calculation Formula

$$C = 1.56 \times H \times T \times [(L+W)/(L \times W)]$$

H - Tile Thickness (mm)

T - Joint Width (mm)

C - Coverage (mm)

W - Tile Width (mm).

COLOUR

Choose from a range of 12 colours of EG-200 Epoxy Tile Grout (2k).

For choosing the right colour refer to Magicrete shade card



SCAN FOR
SHADE CARD

COVERAGE

For interactive coverage calculator visit us

<https://www.magicrete.in/tileadhesive>



SCAN FOR
INTERACTIVE
CALCULATOR

CHEMICAL RESISTANCE @27±1°C

Chemical/ Reagent Name	Constant Exposure	Splash Exposure
H ₂ SO ₄	✓	✓
Acetic Acid	✓	✓
Baking Soda	✓	✓
Sodium Hydroxide	✓	✓
Calcium Chloride	✓	✓
Chloroform	✗	✗
Methylene Chloride	✗	✗
Sugar	✓	✓
Tea	✓	✓
Juice	✗	✓
Beer	✓	✓
Oil	✓	✓
Petrol	✓	✓
Soft Drink	✓	✓
Vinegar	✓	✓
Nitric Acid	✗	✓
Citric Acid	✓	✓
Ethanol	✗	✓
Potassium	✓	✓
Permanganate	✓	✓

Chemical/ Reagent Name	Constant Exposure	Splash Exposure
HCL	✓	✓
Formic Acid	✓	✗
Tartaric Acid	✓	✓
Tannic Acid	✓	✓
Benzoic Acid	✓	✓
Oxalic Acid	✗	✓
Butter	✗	✓
MEK	✓	✓
Carbon Tetra Chloride	✓	👍
Ethylene Glycol	✗	✓
Ammonia Solution	✓	✓
Toluene	✓	👍
Hypochlorine Solution	✓	✓
Xylene	✓	✓
Hydrogen Peroxide	✗	✓
Butyl Acetate	✓	✓
Milk	✗	✓
Acetone	✗	👍
Glycerol	✓	✓
Deionized Water	✓	✓

✓ Suitable

👍 Adequate

✗ Not Suitable



SHELF LIFE

EG-200 carries a shelf life of 12 months, if stored in cool & dry place. However, as temperature, humidity, & other parameters vary from site to site; the information should be treated as a general guideline.

LIMITATIONS

- The use of grouts for tiles does not replace the need for waterproofing membranes. It is recommended to use waterproofing products (also available from Magicrete for the same purpose)
- Grouts are not recommended for use on soft polished marble or delicate glazed tiles.

SAFETY PRECAUTIONS

- Keep out of reach of children.
- Wear suitable protective clothing, gloves, and eye/face protection. After contact with the skin, wash immediately with plenty of clean water. In case of eye contact, rinse immediately with plenty of clean water and seek medical advice.
- It is limited to professional use only. For more details, please refer to the relevant Material Safety Data Sheet, available on request.

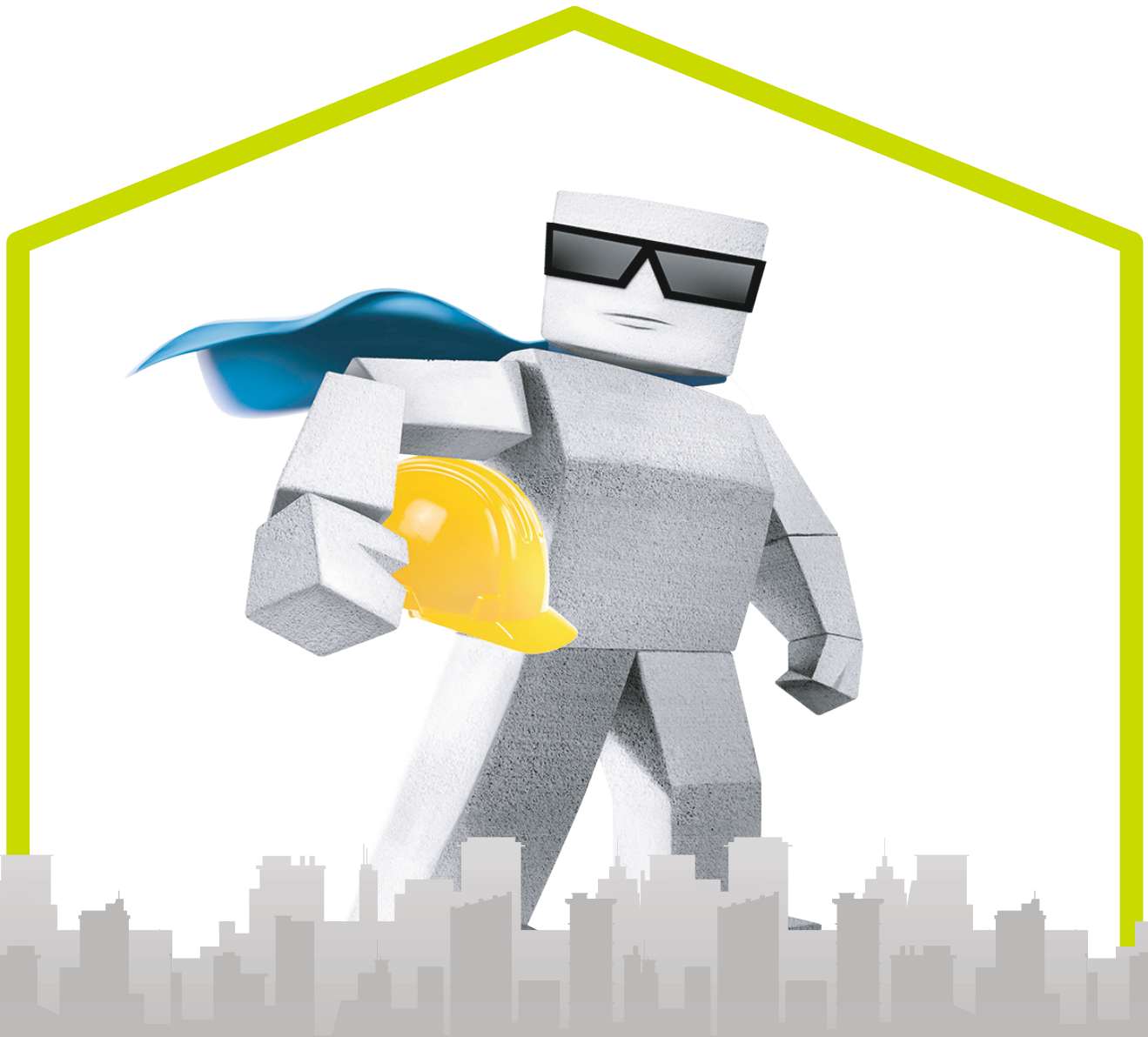
IMPORTANT NOTES

- After 10 days of installation, the maximum stain resistance of the grouted surface is achieved. During this period, it is recommended to protect the surface from exposure to acids and strong cleaners.
- Avoid using grouts in areas with heavy machinery, vehicular traffic, or high footfall.
- While cleaning, change the water/ cloth/ sponge frequently when impregnated with grout.
- When used in shower and pool areas it is recommended to wait for atleast 7 days after grouting.
- Ensure compatibility of the tiles/stones with the mixed material used for grouting. Always refer to the methodology of application section and literature provided by the tile/stone manufacturer and perform a small sample test before grouting the entire area..
- Follow all safety standards and national regulations.
- Should be used when the temperature is between +5 °C and +30 °C.
- Request the safety data sheet if required.
- For any other issues, contact 80 70 40 80 10 or email at info@magicrete.in.

*While the company guarantees its products against defective materials, the use and application of these products are made without guarantee since the conditions of their application are beyond its control. It is recommended to verify with the company that the product is suitable for the intended use, and that this Data Sheet version is the latest one. The company may modify it without prior notice. Technical characteristics are listed for guidance only. For more information, please contact the company office in your location.

magicrete®

magic behind happy homes



Magicrete Building Solutions Pvt. Ltd.

(ISO 9001 :2015, ISO 14001 :2015 & ISO 45001 :2018 Certified co.)

101 Ritz Square, Near Narmad Library,
Ghod Dod Road, Surat-395007 (Gujarat)

80 70 40 80 10

info@magicrete.in

magicrete.in



SCAN FOR
DIGITAL COPY

